



next generation led

info@nextgenerationled.be
www.nextgenerationled.be
Tel + 32 53 71 09 42

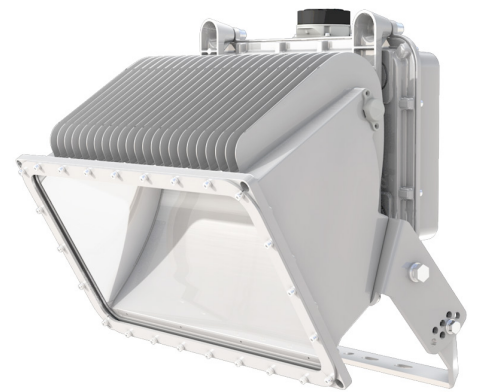
SUMA long distance asymmetric flood light

Properties

- Lifespan L70 %: > 50.000 hours
- Boosted installation efficiency thanks to the external driver
- Linkage with wired, wireless control systems
- Asymmetric wide light distribution
- Tilting structure for optimized aiming (upward:90°, downward: 90°)
- Cast aluminum body and tempered glass 4T (Clear) and powder coating finish
- Outstanding cooling technology and durability
- Can send uniform light distribution even at long distance
- Warranty 5 years (12 hours usage a day)

Application

Ports, airport aprons, container terminals, sporting facilities, parking lots, ...



IP 66

CRI 70

Asymmetric

Wireless

120 lm/W

Specifications

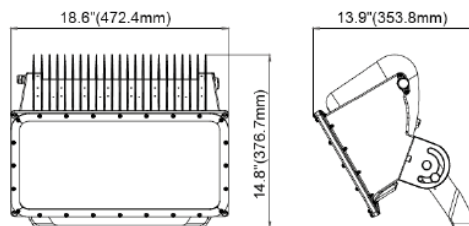
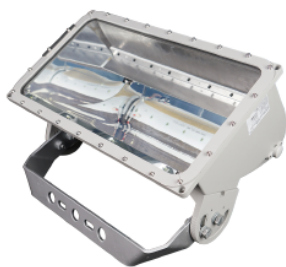
SUMA	SMA400	SMA600
Power	400W	600W
Luminous flux	48.000lm	72.000lm
Powerfactor (Pf)	≥ 0.9	
Input voltage	AC200 ~ 277V / 347 ~ 480V / 50-60Hz	
Color rendering index	70 Ra	
Color temperature	5000K (3000K, 4000K available)	
Temperature in use	- 30°C ~ 55°C	
Weight	12.5kg external driver 18.6kg internal driver	13.5kg external driver 19.3kg internal driver

Updated: October 2019



Specifications

SUMA 400W



Size	18.6 x 14.8 x 13.9 (inch)
	472.4 x 376.7 x 353.8 (mm)

Remote Driver

Specifications

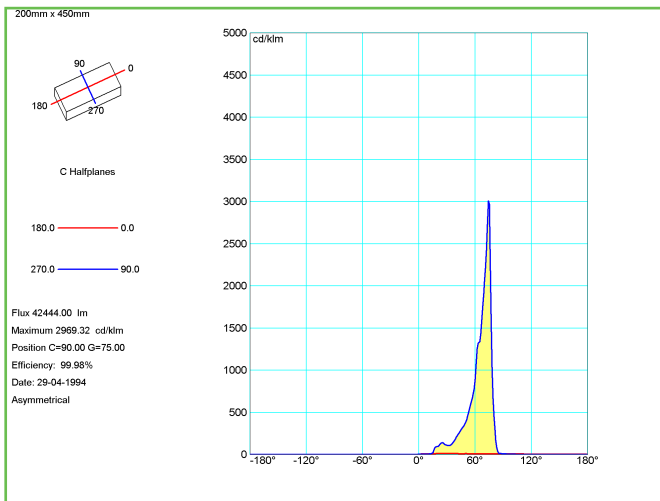
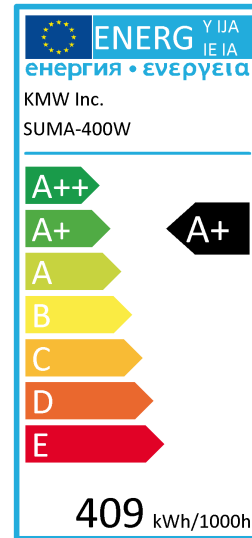


Model Name	RED	
Power Consumption	1.3kW	
Input Voltage	200 ~ 277 Vac	347 ~ 480 Vac
Input Current	Max. 7.6A (@200 Vac)	Max. 5.0A (@347 Vac)
Surge Protection	Line - Line 20kV, Line - FG 20kV	
Driver Manufacturer	GigaTera Inc.	
Size	7.15 x 5.95 x 18.5 (inch) / 181.7 x 151.2 x 470 (mm)	
Weight	28.7 lb / 13.0 kg	

SMA400				
KMDLMBK010320				
	Ground Mounting (Basic)	Ground Mounting (Reverse)	Horizontal Mounting (Basic)	Horizontal Mounting (Reverse)
	Upward 165° / Downward 15°	Upward 55° / Downward 125°	Upward 75° / Downward 105°	Upward 145° / Downward 35°
KMDLMBK010250				
	Ground Mounting (Basic)	Ground Mounting (Reverse)	Horizontal Mounting (Basic)	Horizontal Mounting (Reverse)
	Upward 165° / Downward 15°	Upward 55° / Downward 125°	Upward 75° / Downward 105°	Upward 145° / Downward 35°
KMDLMBK010400				
	Ground Mounting (Basic)	Ground Mounting (Reverse)	Horizontal Mounting (Basic)	Horizontal Mounting (Reverse)
	Upward 145° / Downward 0°	Upward 40° / Downward 110°	Upward 55° / Downward 90°	Upward 130° / Downward 20°
KETBKTL1ZNN001		KMDLMBK010020		
	KMDLMBK010320 + KETBKTL1ZNN001			KMDLMBK010020

ENERGY LABEL

Electrical appliances carry an energy label. This label prints the so-called energy efficiency score in classes. These classes range from 'very energy efficient' (A++) to 'very waste of energy' (E). A more expensive new device may eventually turn out to be cheaper if the energy score is good. IPEA is the new system for luminaire energy efficiency assessment.

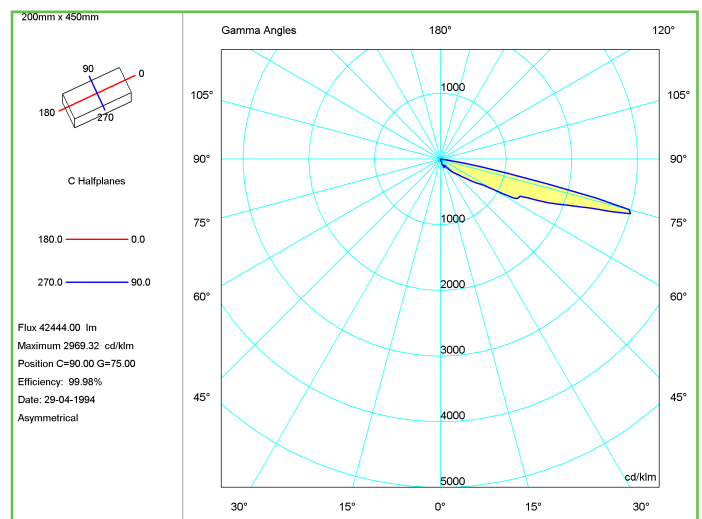


BEAM

The Illuminance Cone Diagram indicates the maximum illuminance at different distances from the fixture.

POLAR DIAGRAM

The polar luminous intensity graph illustrates the distribution of luminous intensity, in candelas, for the transverse (solid line) and axial (dashed line) planes of the luminaire. The shown curve provides a visual guide to the type of distribution expected from the luminaire e.g. wide, narrow, direct, indirect... in addition to intensity.



SUMA

REFERENCE	WATT	LUMEN	COLOR	INTERNAL / EXTERNAL DRIVER
171-0101	400 W	42000 lm	4000 K	EXTERNAL
171-0102	400 W	42000 lm	5000 K	EXTERNAL
171-0106	400 W	42000 lm	4000 K	INTERNAL
171-0108	400 W	42000 lm	5000 K	INTERNAL
171-0109	600 W	72000 lm	4000 K	INTERNAL
171-0107	600 W	72000 lm	5000 K	INTERNAL
171-0103	800~1200 W	RED (REMOTE DRIVER)		

