



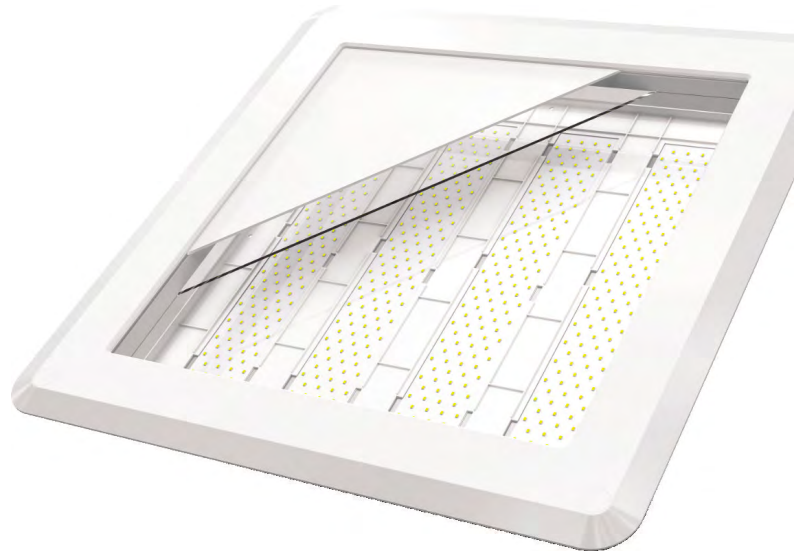
next generation led

info@nextgenerationled.be
www.nextgenerationled.be
Tel + 32 53 71 09 42

SOFFITO IP65 PANEL FOR CLEANROOMS

Properties

- Lifespan L90 \geq 100.000 hours
- Main body fire protection grade: V0
- Resistant to chlorine & quaternary cleaners at standard dilution
- Mounting: recessed or surface mount applications
- The one piece plastic frame assembly is fabricated from a special blend of polymers that are fire resistant, will not rust and offers impact resistance
- Optional dual lens, reduces thermal exchange in cool rooms and chillers
- Warranty : 5 years



Resistant to:



IP 65	5 y. warranty	0-10V DALI ZIGBEE	Resistant to alkaline and acids	142lm/W
-------	---------------	-------------------	---------------------------------	---------

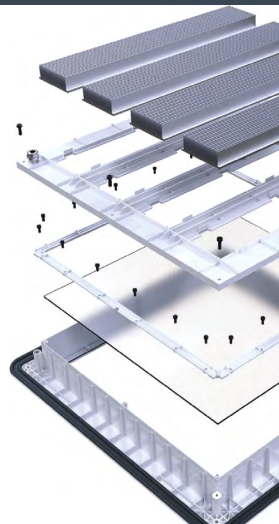
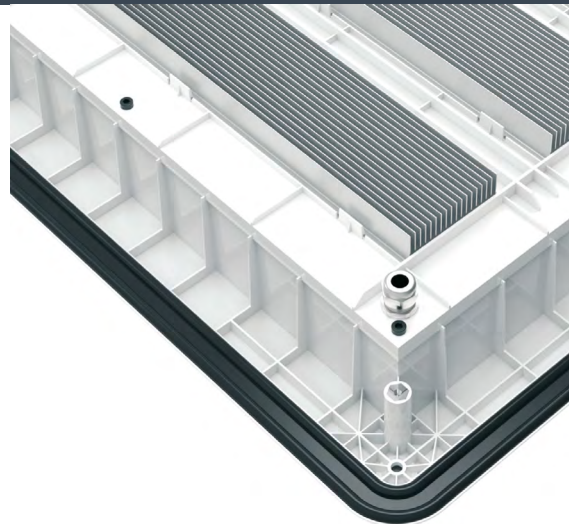
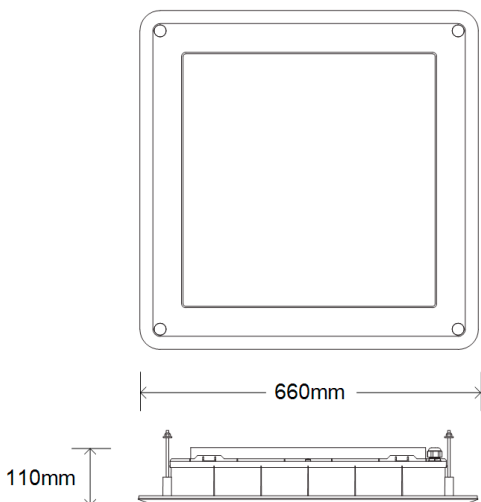
Specifications

SOFFITO	40W	60W	80W	100W	150W	180W
Size (mm)	660x660 mm					
Thickness	110 mm					
Color rendering index	Ra > 85 (95 possible)					
Beam angle	115 °					
Power factor (PF)	0.99					
Input voltage	AC90-240 V / 50 Hz					
Color temperature	4000 K (3 ,5 ,6K possible)					

Applications

Food, medical, pharmaceutical, chemical, cleanroom industries.

Updated: December 2020

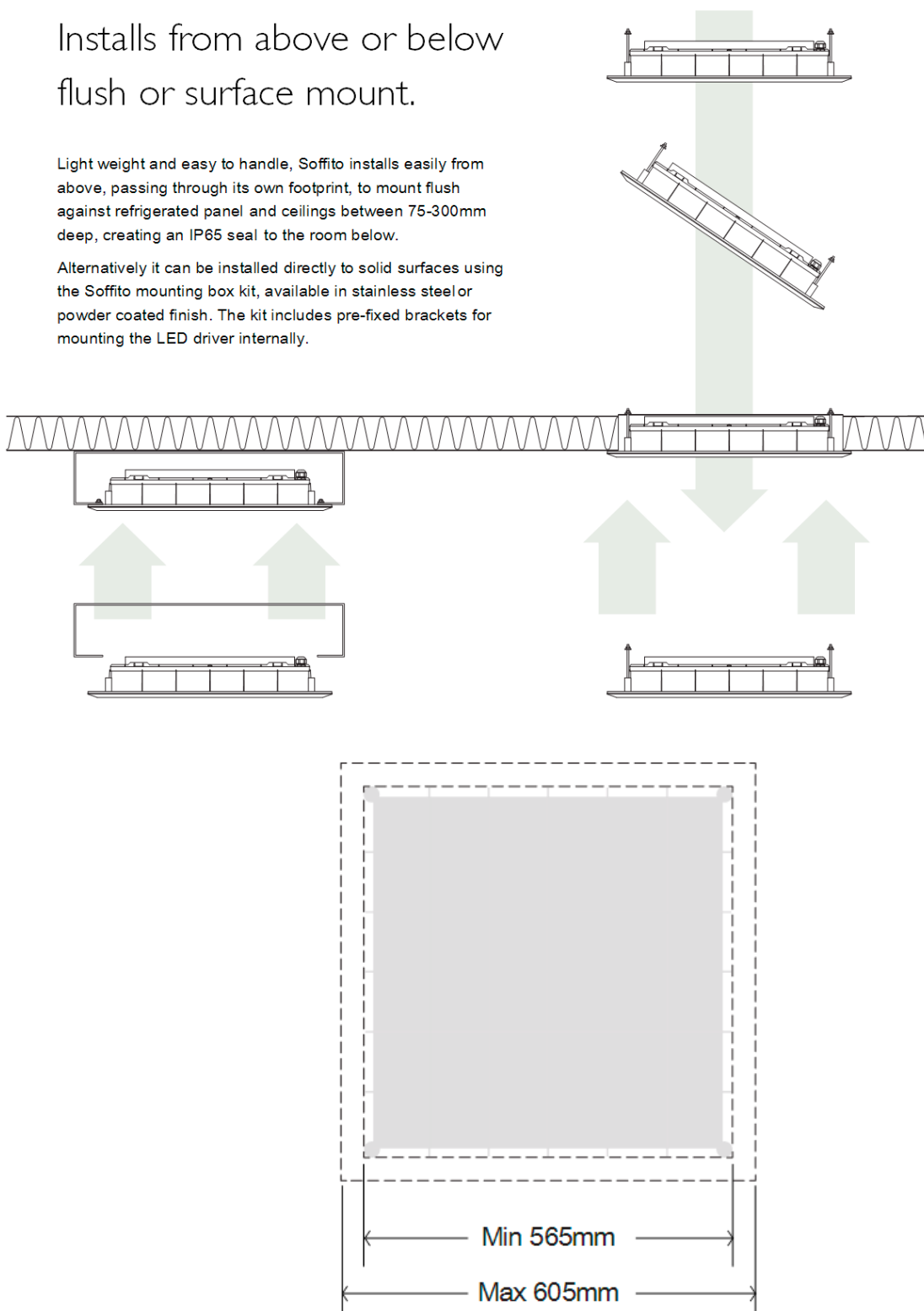


Specifications

Installs from above or below
flush or surface mount.

Light weight and easy to handle, Soffito installs easily from above, passing through its own footprint, to mount flush against refrigerated panel and ceilings between 75-300mm deep, creating an IP65 seal to the room below.

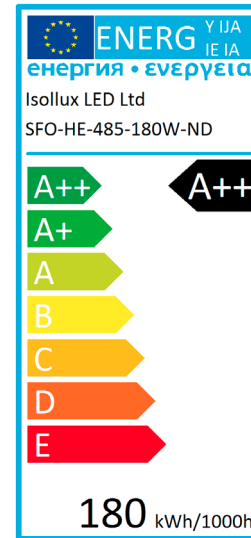
Alternatively it can be installed directly to solid surfaces using the Soffito mounting box kit, available in stainless steel or powder coated finish. The kit includes pre-fixed brackets for mounting the LED driver internally.



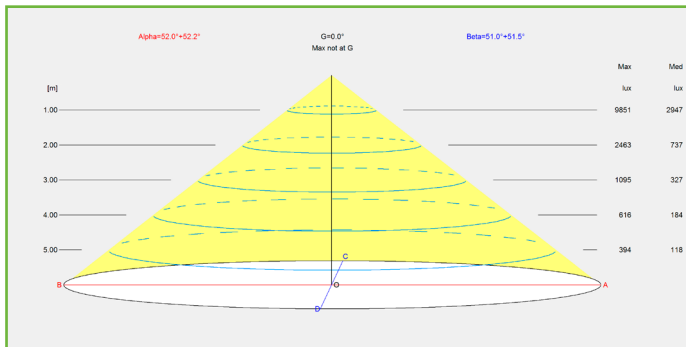
- [Isollux Soffito vented box install guide](#)
- [Isollux Soffito Mounted Box Install Guide](#)
- [Isollux Soffito Flashing Kit Install Guide](#)

ENERGY LABEL

Electrical appliances carry an energy label. This label prints the so-called energy efficiency score in classes. These classes range from 'very energy efficient' (A++) to 'very waste of energy' (E). A more expensive new device may eventually turn out to be cheaper if the energy score is good. IPEA is the new system for luminaire energy efficiency assessment.



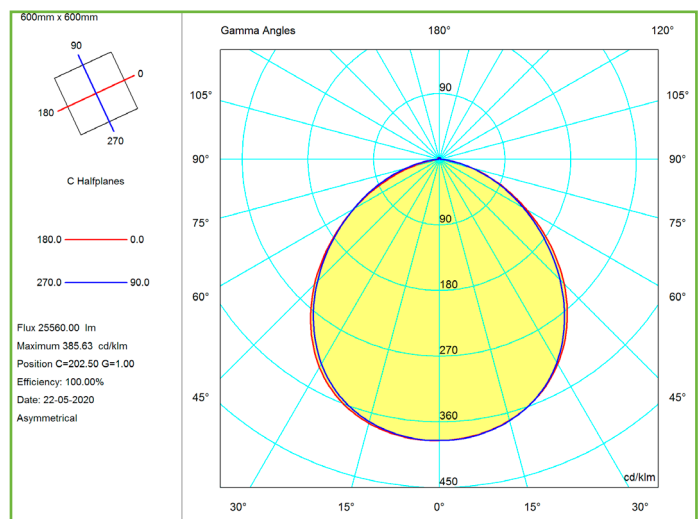
BEAM



The Illuminance Cone Diagram indicates the maximum illuminance at different distances from the fixture.

POLAR DIAGRAM

The polar luminous intensity graph illustrates the distribution of luminous intensity, in candelas, for the transverse (solid line) and axial (dashed line) planes of the luminaire. The shown curve provides a visual guide to the type of distribution expected from the luminaire e.g. wide, narrow, direct, indirect... in addition to intensity.





next generation led

Soffito IP65 CLEANROOM Panel

REFERENCE	SIZE	WATT	LUMEN	COLOR	DIMMABLE
185-0112	660x660mm	100 W	14200 lm	4000 K	YES
185-0113	660x660mm	150 W	21300 lm	4000 K	YES
185-0114	660X660mm	180 W	25560 lm	4000 K	YES