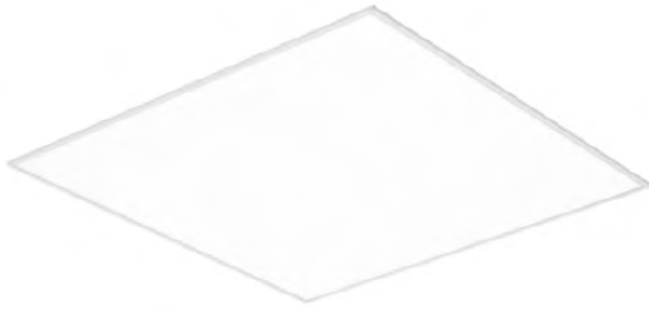




next generation led

info@nextgenerationled.be  
www.nextgenerationled.be  
Tel + 32 53 71 09 42



# IP65 PANEL



## Properties

- Lifespan L70B10: 100.000 hours
- Mounting: in coffered ceilings
- Body: sheet steel powder-coated
- Protection class: I
- Ambient humidity: 20-80%
- Warranty : 5 years

IP 65      5 y. warranty      DALI      IK07

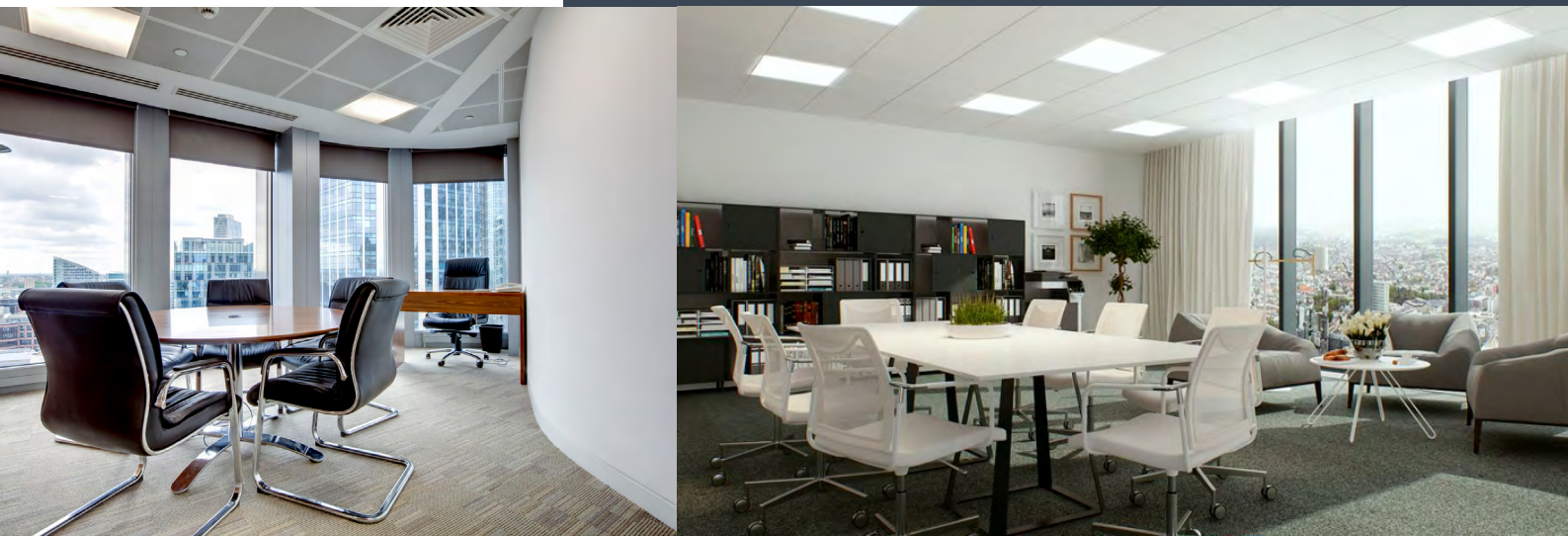
## Specifications

IP65 PANEL	60X60	120X30
Power		40W
Size (mm)	597x597	1197x297
Thickness		77 mm
Lumen production		4250 Lm
Color rendering index		<b>Ra &gt; 85</b>
Beam angle		115 °
Power factor (PF)		0.99
Input voltage	AC220-240 V / 50 Hz	
Color temperature	4000 K	
Ambient temperature	from 0°C to +35°C	

## Applications

Offices, conference rooms, hotels, restaurants, residential premises, public utility buildings, corridors, bathrooms, etc...

Updated: July 2018



## IP65 Panel

REFERENCE	SIZE	WATT	LUMEN	COLOR	BEAM
185-0650	60 x 60	40 W	4250 Lm	4000 K	115°



L [mm]	W [mm]	H [mm]	[kg]
597	597	77	5,2
1197	297	77	5,2

