



 AIR~LUME

- Pure air
- Pure light
- Pure sound
- Pure wellness



\*Designs registered. Patents pending.





Our objective is to amplify businesses' driving force, their people, through purified environments.

Holistic lighting solutions for optimal health, productivity and wellbeing.



\*Designs registered. Patents pending.



Have you ever stood by crashing waves  
and breathed in the sea air?  
Invigorating, isn't it?

But the air we breathe every day in our  
normal lives: in offices, at home, etc - all  
15,000 litres of it - is often contaminated  
with micro-organisms and pathogens.

Workplace furnishings, equipment and  
cleaning products also release  
chemicals, adding to the toxicity.

\*Designs registered. Patents pending.





\*Designs registered. Patents pending.



In fact, the US Environmental Protection Agency confirmed that indoor air can be up to five times as polluted<sup>1</sup> as outdoor air.

In the UK, 86% of over 1,000 respondents had observed presenteeism of sick employees within their organisation<sup>2</sup>, according to the latest CIPD Health and Well-being at Work survey.

With 40% of all sick leave being traceable back to indoor air pollution and poor air quality<sup>3</sup> (Ambius, 2018). Airborne germs remaining active in the air for up to 45 minutes, this can create repeat contamination within work spaces - particularly meeting rooms.



Dedicated air purification is clearly the answer.

Free standing units are bulky, noisy and maintenance intensive, drawing air and dust from floor level.

Airlume's smart, yet critical, level of air flow comes from above head height, closer to the air we breath and share. Also combatting air conditioning, which can incubate germs and spores, circulating them through buildings.

Our solution is simple: combining powerful active air purification into high-quality lights, which quietly and effectively freshen the environment all day long.



\*Designs registered. Patents pending.







\*Designs registered. Patents pending.





We use an innovative quadruple-action process for air purification:

> A 10-micron G4 particulate filter removes airborne allergens like pollen and dust

> 12 mm thick activated Carbon filters for the removal of VOCs , toxic gasses and general odours.

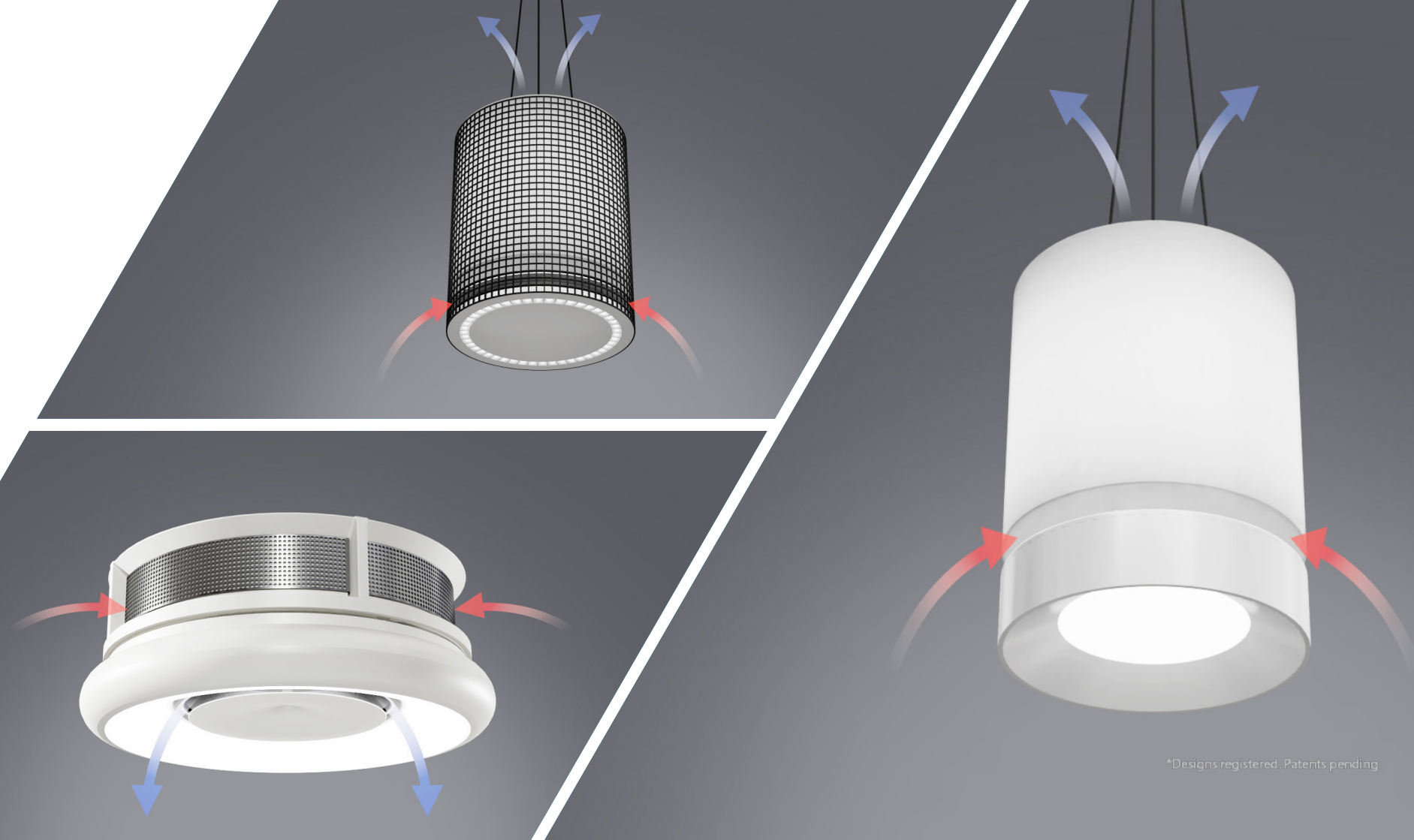
> Clinical grade, 265nm long life UVC LEDs for the sterilisation of germs, bacteria, viruses and fungal spores

> Photocatalytic TiO<sub>2</sub> reactor, combined with UVC light, produces OH radicals. Further removing VOCs, such as Formaldehyde, NO<sub>2</sub>, and other toxics gasses

> Optional silver ION antimicrobial surface treatment on all exterior surfaces and acoustic elements

> Near silent killers of germs, with noise levels of just 40 to 50 decibels. Not only in components, but design. The blades, featured within our ACO Cloud and Blade ranges, are noise absorbing elements for ambient acoustic control.

Similar to noise levels within a library, or at maximum output, a quiet office.



\*Designs registered. Patents pending.





Work environments face real loss of business by not taking preventative measures, as seen in the below PR incident.

Widely publicised WeWork closed approximately 2,300 phone booths in the US and Canada, amid a formaldehyde scare in October 2019.

“Long-term exposure to formaldehyde, such as that experienced by workers in jobs who experience high concentrations over many years, has been associated with certain types of cancers.” WeWork informed tenants<sup>4</sup>.

Phone booths function as private work stations, frequently used to make voice and video calls; a popular facility within open-plan offices internationally.

Air-Lume's unique carbon cells reduce VOCs (volatile organic compounds) such as Formaldehyde, the G4 removes allergen particulates. Giving occupants and facilities peace of mind.



\*Designs registered. Patents pending.





The indoor, built environment plays a critical role in our overall well-being. Both the amount of time we spend indoors, as well as the ability of buildings to positively or negatively influence our health.

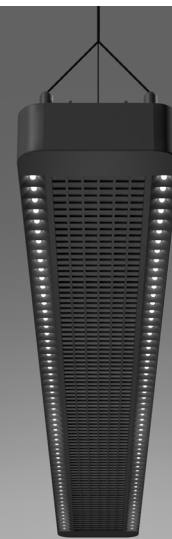
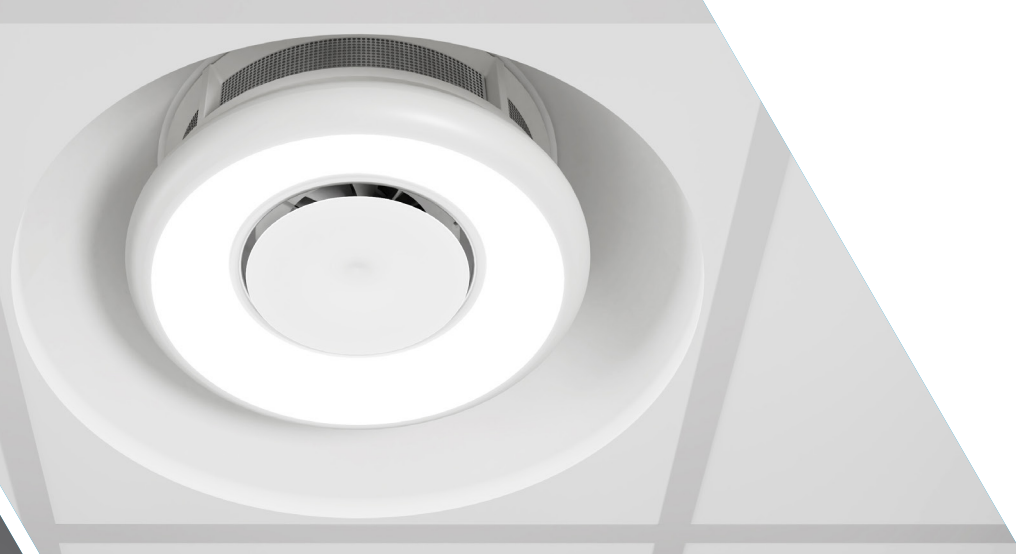
A Harvard study<sup>5</sup> found that on average, cognitive scores of employees were between 61-101% higher on days within “green” offices, with low concentrations of VOC’s, compared to conventional offices with high concentrations.

In creating an optimal work environment, you could double the return from your highest business cost, your workforce output.



\*Designs registered. Patents pending.





We haven't compromised on light quality either.

Our engineering team, veterans of the lighting industry, have designed luminaires with latest LEDs and optics to provide best-in-class colour rendering, ultra-low flicker and low glare.

Resulting in one of the most visually comfortable lighting systems on the market, great for concentration and kind to skin.

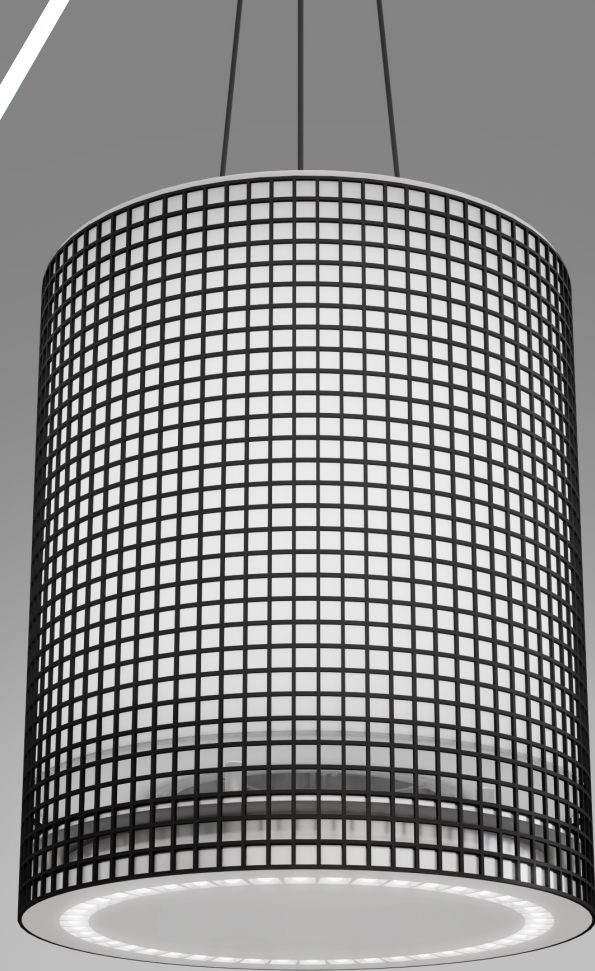
Our design is not only aesthetic, but every luminaire's form fits function.

Incorporation of acoustic controls through design, reduces noise disturbance for optimal sense of peace and focus within any environment.

\*Designs registered. Patents pending.







\*Designs registered. Patents pending.







This fusion of pure air and a beautiful lit environment is what makes AIRLUME unique.

So don't compromise with your building's occupants, or your offering.

Explore the benefits of AIRLUME and put wellness at the heart of your workplace.

\*Designs registered. Patents pending.





# Sources

1. <https://nepis.epa.gov/Exe/ZyPURL.cgi?Dockey=2000UC5T.txt>
2. <https://www.cipd.co.uk/about/media/press/020518-health-wellbeing-survey>
3. <https://www.ambius.com/offices/office-worker-survey/>
4. <https://amp.theguardian-com.cdn.ampproject.org/c/s/amp.theguardian.com/business/2019/oct/14/wework-phone-booths-formaldehyde-cancer>
5. <http://nrs.harvard.edu/urn-3:HUL.InstRepos:27662232>



Designs registered. Patents pending.





■ Contact  
Mark Cunningham

■ Telephone  
+44 (0) 7943 753 743

■ Email  
[Mark.Cunningham@Trinitylighting.co.uk](mailto:Mark.Cunningham@Trinitylighting.co.uk)

■ Site  
[air-lume.co.uk](http://air-lume.co.uk)